



Holmsdale Grove, Barnehurst, DA7 6NX
Guide price £375,000 Freehold

 3  1  2  D

The Homes Group are delighted to offer to the market this three bedroom family home with off road parking and a detached garage to the rear that is located in a popular road close to local schools and shops and is situated within 0.9 miles of both Barnehurst and Slade Green Train Stations.

The accommodation comprises of an entrance hall, a 18'1 x 9'10 living room, a 10'5 x 9'10 dining room, plus an 11'7 x 5' kitchen on the ground floor. There are three bedrooms and a bathroom located on the first floor.

There is a drive way for two cars at the front and a detached 20' x 14'6 detached garage located at the end of the 33' south facing rear garden.

Entrance Hall

14'8 x 5' (4.47m x 1.52m)

Living Room

18'1 into bay x 9'9 (5.51m into bay x 2.97m)

Dining Room

10'5 x 9'10 (3.18m x 3.00m)

Kitchen

11'7 x 5' (3.53m x 1.52m)

Landing

Bedroom One

15'9 x 9'6 (4.80m x 2.90m)

Bedroom Two

13' x 9'5 (3.96m x 2.87m)

Bedroom Three

9'2 x 5'5 (2.79m x 1.65m)

Bathroom

7'9 x 5'5 (2.36m x 1.65m)

Rear Garden

33' (10.06m)

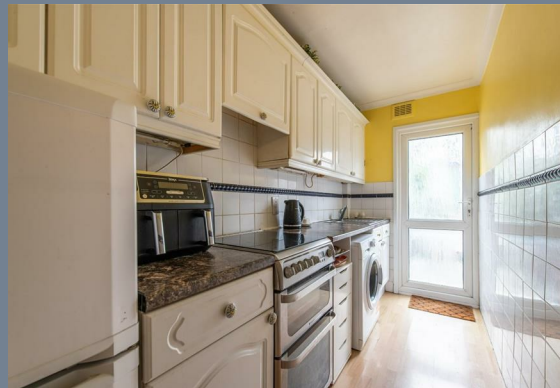
Detached Garage

20' x 14'6 (6.10m x 4.42m)

Driveway

Tenure - Freehold

Council Tax - Band D





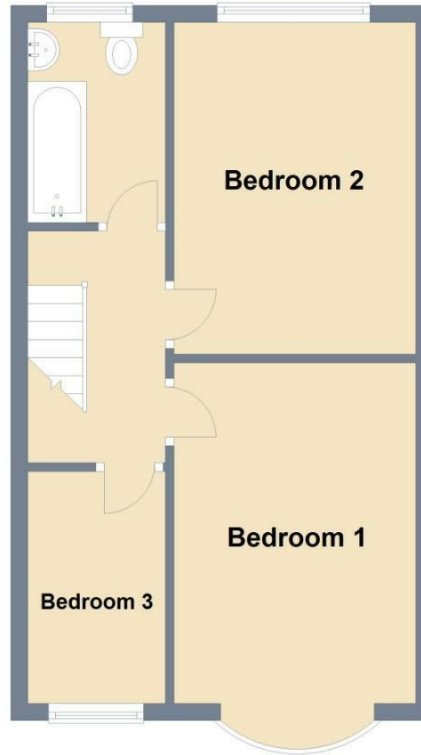
Ground Floor

Approx. 37.8 sq. metres (406.6 sq. feet)

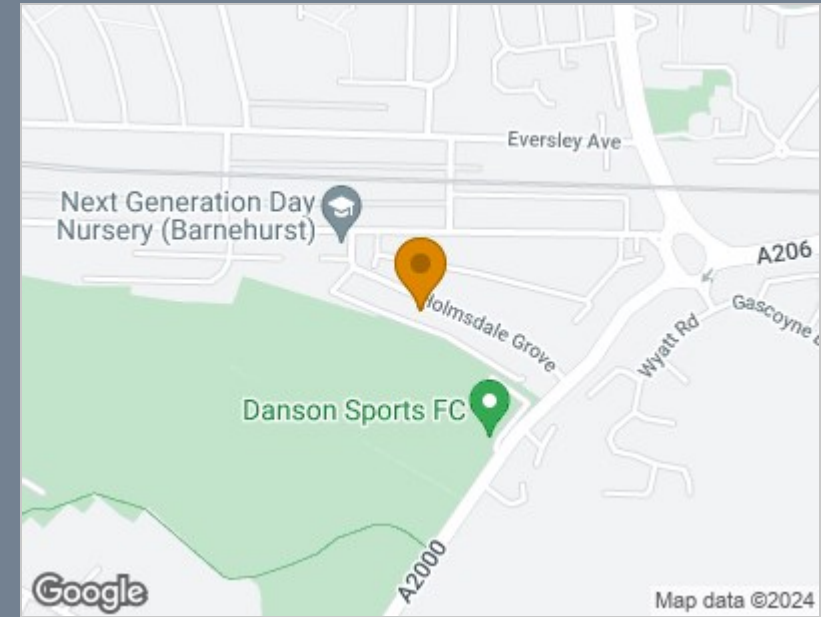


First Floor

Approx. 37.8 sq. metres (406.5 sq. feet)



Total area: approx. 75.5 sq. metres (813.1 sq. feet)



Energy Efficiency Rating		Current	Potential
<i>Very energy efficient - lower running costs</i>			
(92 plus) A			
(81-91) B			86
(69-80) C		66	
(55-68) D			
(39-54) E			
(21-38) F			
(1-20) G			
<i>Not energy efficient - higher running costs</i>			
England & Wales	EU Directive 2002/91/EC		

Viewing

Please contact The Homes Group Office on 01322 875000 if you wish to arrange a viewing appointment for this property or require further information.

These particulars, whilst believed to be accurate are set out as a general outline only for guidance and do not constitute any part of an offer or contract. Intending purchasers should not rely on them as statements of representation of fact, but must satisfy themselves by inspection or otherwise as to their accuracy. No person in this firm's employment has the authority to make or give any representation or warranty in respect of the property.